

**IFPDA Print Fair 2024**
**Radcliffe Bailey**

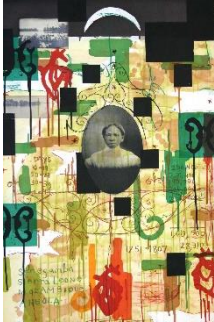

In the Garden,  
2003

\$5000  
Unframed.

Color aquatint  
etching with color  
photocopy chine  
collé and velvet.

31" x 42"

Edition of 30



Until I Die/  
Crossing, 1997

\$10,000  
Unframed.  
  
\$11,550  
Framed.

Color aquatint  
etching with  
photogravure and  
chine collé.

44 ¼" x 30 ¾"

Edition of 35



Until I Die/ In Dat  
Returnal Day, 1997

\$5000  
Unframed.

Color aquatint  
etching with  
xerography and  
chine collé.

30" x 22 ½"

Edition of 25

**Mary Lee Bendolph**


Snaggletooth, 2020

\$4500  
Unframed.

Color softground  
etching with aquatint  
and spitbite aquatint.

38 ¼" x 39 ¾"

Edition of 50

**Essie Bendolph  
Pettway**


Equal Justice, 2020

\$3000  
Unframed.

Color softground  
etching with  
aquatint.

40" x 37"

Edition of 50

**IFPDA Print Fair 2024**



Stacked Bricks,  
2020

\$3000  
Unframed.

Color softground  
etching with  
aquatint.

35 ¾" x 36 ½"

Edition of 50

**Lonnie Holley**



Black in the Midst  
of the Red, White  
and Blue, 2017

\$3,000  
Unframed.

Color woodblock.

39 ⅞" x 29 ¾"

Edition of 20



From the Lines of  
the Brain, 2017

\$3,000  
Unframed.

Color woodblock.

39 ⅞" x 29 ¾"

Edition of 20



It Starts with the  
Blood and Ends  
with the Water,  
2017

\$3,000  
Unframed.

Color woodblock  
with glitter.

39 ⅞" x 29 ¾"

Edition of 20



Faith is the  
Aftermath of  
Destruction, 2019

\$59,500  
Framed.

Collage on museum  
board with spray  
paint.

60" x 104"



Placement, 2018

\$30,500  
Framed.

Collage on museum  
board.

60" x 52"



From Within A  
Mother, 2018

\$18,000

Wood, copper, found  
metal.

29" x 15" x 16"