

isselbacher gallery

64 East 86th Street, New York, NY 10028 917-509-7833 isselbacherart@aol.com

IFPDA PRINT FAIR, OCTOBER 27-30, 2022

In ASSOCIATION with Timothy Baum

Pierre BONNARD (1867-1947)

Femme au parapluie

Lithograph, printed in color, 1895

Signed proof, separate from the edition of 110

(published in *L'Album de La Revue Blanche*)

Image size: 9 7/8 x 6 1/8 inches

Reference: Bouvet 33. Roger-Marx 35



Georges BRAQUE (1882-1963)

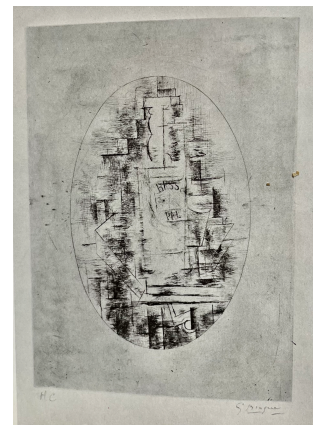
Pal (short for Pale Ale, with a bottle of Bass Ale and a glass on a table)

Etching and drypoint, 1911

From the only published edition (published in 1954 by Galerie Maeght, Paris) limited to 30 copies only, plus a small number of additional proofs, including 6 "hors commerce," of which this is one; annotated "H.C." in pencil in the lower left and signed in pencil in the lower right

Image size: 18 x 12 7/8 inches

Reference: Vallier 9



Victor BRAUNER (1903-1966)

La Fiancée heliotropique

Lithograph, printed in color, 1955

One of 125 signed and numbered examples, published by L'Oeuvre Gravée, Paris, with their blindstamp in the margin

Image size: 15 3/8 x 21 7/8 inches



Marc CHAGALL (1887-1985)

Les Cyclistes

Lithograph, 1956

One of 30 signed and numbered examples

Sheet size: 26 x 19 13/16 inches

Reference: Mourlot 171



Paul DELVAUX (1897-1994)

Reflection

Lithograph, 1975

One of 100 signed and numbered examples,
published by Rizzoli International, New York

Image size: 12 1/2 x 9 13/16 inches

Reference: Jacob 92



Jean DUBUFFET (1901-1985)

Homme au chapeau mou devant un mur

Lithograph, on Montval paper, 1945

Trial proof, separate from the edition of 20
(10 printed on Montval paper and 10 printed on
"Japon Impérial" paper); signed in pencil in the
lower left and annotated "épreuve d'essai"
in pencil in the lower right

Sheet size: 15 x 11 inches

Reference: Webel 70



Max ERNST (1891-1976)

Untitled

Etching and aquatint, 1950

One of 30 signed and numbered examples,
published by Marcel Zerbib, Paris

Image size: 5 x 6 7/8 inches

Reference: Spies/Leppien 41



Valentine HUGO (1890-1968)

Rêve d'hibou (The Owl's Dream)

Etching, 1937

Proof state, separate from the published
edition of 17 examples only; annotated
"ép état" by the artist in pencil in the lower right
Image size: 9 5/16 x 5 13/16 inches



Marie LAURENCIN (1883-1956)

Le Ballet

Etching with extensive hand-coloring in watercolor,
on laid paper, 1912

Signed and dated in pencil in the lower right and
inscribed with dedication in pencil in the lower left:

"à Jane Martin bien affectueusement M-L"

Image size: 7 3/4 x 9 3/4 inches

Reference: Marchesseau 21



René MAGRITTE (1898-1967)

Les Moyens d'Existence

Etching and aquatint, printed in color,
on "Japon ancien" paper, 1968

"Hors commerce" example, separate
from the edition of 150, published
posthumously by the printer
Georges Visat, Paris; annotated "H.C." in pencil
in the lower left and signed with artist's
stamped signature in the lower right
Image size: 6 5/16 x 4 1/4 inches
Reference: Kaplan/Baum 20



MAN RAY (1890-1976)

L'Homme infini

Lithograph, printed in color, 1970

From an edition of 150 examples numbered
in Arabic numerals, plus an additional
20 artist's proofs (numbered in
Roman numerals)

Printed by Chave, Vence, France;
published by Edition Kung, Tokyo
Image size: 14 1/2 x 19 3/8 inches
Reference: Anselmino 89



Henri MATISSE (1869-1954)

Nu de face, jambe droite repliée

Etching, on "Chine appliqué" paper, 1929

One of 25 signed and numbered examples
Image size: 5 3/4 x 4 1/4 inches
Reference: Duthuit 199



Joan MIRO (1893-1983)

Daphnis et Chloé

Drypoint, 1933

Unsigned proof, on "Japon" paper, separate from the edition of 110, published by Tériade, Paris (10 printed on "Japon" paper and 100 printed on Arches paper)

Image size: 10 3/8 x 12 3/4 inches

Reference: Dupin 9



Joan MIRÓ (1893-1983)

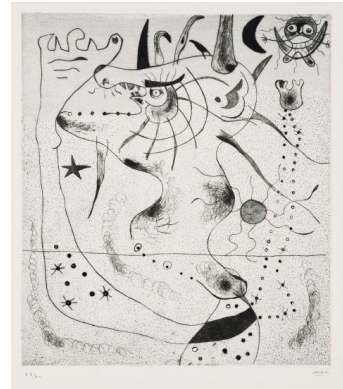
L'Eveil du géant

Drypoint, 1938

One of 30 signed and numbered examples, co-published by Pierre Matisse and Pierre Loeb, Paris and New York

Image size: 10 3/8 x 9 1/8 inches

Reference: Dupin 26



Giorgio MORANDI (1890-1964)

Paesaggio

Etching, ca. 1930

One of 50 signed and numbered examples; this impression inscribed with dedication and second signature in pencil in the lower right: "Ai Signori Vass./Bologna, 12 giugno 1959 Giorgio Morandi"

Image size: 6 7/8 x 7 5/8 inches

Reference: Vitali 77



Pablo PICASSO (1881-1973)

Deux Buveurs Catalans from *La Suite Vollard*

Etching, on laid, Montval paper with the
"Picasso" watermark, 1934

Signed example from the edition of 260,
published by Ambroise Vollard, Paris

Image size: 9 3/8 x 11 5/8 inches

Reference: Bloch 228. Baer 442



Georges ROUAULT (1871-1958)

Femme fière from *Les Fleurs du mal*

Aquatint, printed in color, 1938

One of 250 examples, commissioned by
Ambroise Vollard, Paris and released by
Roger Lacourière, Paris, following Vollard's
death in 1939

Image size: 12 1/4 x 8 1/4 inches

Reference: Chapon/Rouault 275



Kurt SELIGMANN (1900-1962)

Phantom of the Past from *VVV Portfolio*

Etching and aquatint, 1942

One of 20 signed and dated examples,
published by VVV, New York

Image size: 13 7/8 x 11 5/8 inches

Reference: Mason 116



Cindy SHERMAN (born 1954)

Under the WTC (The Arrival)

Gelatin silver print: 1980 image, printed in 2001

One of 100 numbered copies

Signed, numbered, dated and titled in pencil
on the verso

Image size: 7 7/16 x 5 1/2 inches



Paul SIGNAC (1863-1935)

En Hollande-La Balise

Lithograph, printed in color on China paper, 1894

One of only 20 numbered examples (out of a total edition of 60)
printed with the “remarque” (image: a sailboat at the lower left)

Signed in green ink in the lower left and numbered
in the lower right

Printed by master printer Auguste Clot, Paris;

Published by Gustave Pellet, Paris

Image size (excluding “remarque”): 12 1/4 x 16 1/8 inches

Reference: Kornfeld/Wick 8



Dorothea TANNING (1910-2012)

Bateau bleu

Lithograph, printed in color, 1950

One of 200 signed and numbered examples,
published by Guilde de la Gravure,
Geneva and Paris

Image size: 19 1/2 x 13 3/8 inches

Reference: Waddell/Ruby 5

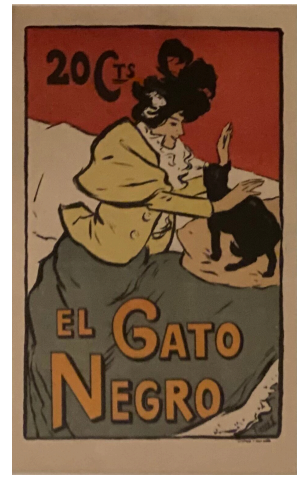


Joaquín TORRES-GARCÍA (1874-1949)

El Gato Negro

Lithograph, printed in color, 1898

Image size: 8 ½ x 5 ¼ inches



Edouard VUILLARD (1868-1940)

Place le soir

Lithograph, printed in color on China paper, 1899

Unsigned proof, printed by master printer

Auguste Clot, Paris; separate from the edition of 100

(published by Ambroise Vollard, Paris, in the album *Quelques aspects de la vie de Paris*)

Image size: 10 15/16 x 15 inches

Reference: Bouvet 64



Tom WESSELMANN (1931-2017)

Great American Nude Cut Out

Thinned Liquitex paint and pencil, on die-cut museum board mounted to matboard (as issued) in three colors, 1970

One of 100 signed, dated and numbered examples, each of which is a unique work published by the artist himself

Image size: 13 1/8 x 17 inches

