

Josef Albers

(Bottrop 1888 - 1976 New Haven/Connecticut)

"SP VI"

from Portfolio "SP"

screenprint in colors 1967

61,4 x 61,4 cm image 49,8 x 49,8 cm

épreuve III/XII sign. num. dat.

Edition of 137

Danilowitz 175.6



Louise Bourgeois

(Paris 1911 - 2010 New York)

No title

from "Ode à ma Mère" (Blatt 1)

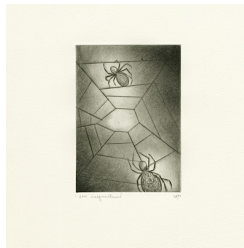
etching 1995

30 x 29,9 cm 25,1 x 10,2 cm

15/45 sign. num. dat.

Edition of 170

MoMA 4b/III



Louise Bourgeois

(Paris 1911 - 2010 New York)

No title

from "Ode à ma Mère" (Blatt 4)

etching 1995

30 x 29,7 cm, 17,5 x 12,6 cm

15/45 sign. num. dat.

Edition of 170

MoMA 7b/III



Eduardo Chillida

(San Sebastián 1924 - 2002 San Sebastián)

"Gurutze Gorria I"

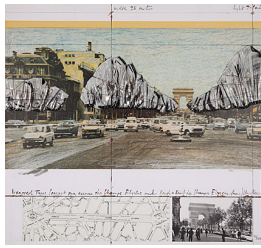
lithograph 1984

76,2 x 56,1 cm Pr. 66,2 x 56,1 cm

88/150 sign. num.

Edition of 180

van der Koelen 84011



Christo & Jeanne-Claude

(Gabrowo 1935–2020 NY) (Casablanca 1935–2009 NY)

"Wrapped Trees"

Project for the Avenue des Champs-Élysées, Paris

lithograph and Collage 1992

69,6 x 74,8 cm

10/100 sign. num. dat.

Edition of 160

Schellmann 160



Richard Hamilton

(London 1922 - 2011 Henley-on-Thames, London)

"Picasso's meninas"

aquatint with drypoint, polished 1973

75,6 x 57 cm 57,2 x 49,1 cm

45/90 sign. num. bet.

Auflage 153

Lullin 91



Tom Hammick

(geb. 1963 in Tidworth, UK)

"Day and Night"

etching 2019

50 x 40 cm

E.V. 7/30 sign. num. dat.

editon 30



Tom Hammick
(geb. 1963 in Tidworth, UK)
"The Night is a Starry Dome"
etching, epreuve variant 2019
54 x 44 cm
E.V. 5/30 sign. num. dat.
Edition of 30



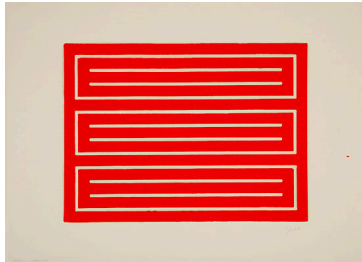
Tom Hammick
(geb. 1963 in Tidworth, UK)
"The Warm Ligurian Sea"
Subtitled: Shelter 1
reduction woodcut 2022
120 x 100 cm
E.V. 10/10 sign. num. dat.
Edition of 18



Tom Hammick
(geb. 1963 in Tidworth, UK)
"Garden in a Time of Loss"
reduction woodcut 2023
144,5 x 110 cm
E.V. 4/20 sign. num. dat.
Edition of 20



Tom Hammick
(geb. 1963 in Tidworth, UK)
"Night Swimmer II"
reduction woodcut 2023
75 x 107 cm
E.V. 3/17 sign. num. dat
Edition of 17



Donald Judd
(Excelsior Springs 1928 - 1994 New York)
"Untitled 1962 - 1979"
Woodcut in cadmium red
woodcut in red on Offsetpaper 1962/79
53,7 x 73,7 cm 37,1 x 50,4 cm
7/25 sign. num. dat.
Edition of 25
Schellmann 33



Alex Katz
(geb. 1927 Brooklyn, NY)
"Ada"
woodcut in colors 2011
55,1 x 75,4 cm
18/70 sign. num.
Edition of 70
Albertina 460



Alex Katz
(geb. 1927 Brooklyn, NY)
"Yellow Flags on White"
pigment print in colors 2023
61 x 76,2 cm
11/150 sign. num. dat.
Edition of 150
Albertina 792



Alex Katz

(geb. 1927 Brooklyn, NY)

"Purple Irises on Red"

pigment print in colors 2023

61 x 76,2 cm

11/100 sign. num. dat.

Edition of 100

Albertina 794



Imi Knoebel

(geb. 1940 Dessau)

"Alte Liebe H Ed."

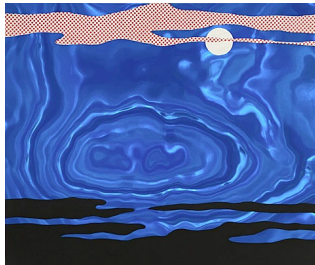
3 part series

collage, Acrylic on foil 2011/2021

18 x 18 cm

3/5 sign. num. dat. bez.

Edition of 5



Roy Lichtenstein

(Manhattan 1923 - 1997 Manhattan)

"Moonscape"

from Mappenwerk "11 Pop Artists", vol. I

screenprint on blue Rowlux 1965

50,5 x 60,8 cm

160/200 sign. num. dat.

Edition of 255

Corlett 037



Roy Lichtenstein

(Manhattan 1923 - 1997 Manhattan)

"Industry and the arts (I)"

screenprint on aluminum 1969

66 x 48 cm, image 43,7 x 36,4 cm

42/100 sign. num. dat.

Edition of 100

Corlett 085



René Magritte
(Lessines 1898 - 1967 Brüssel)
"Paysage de Baucis"
etching 1966
38,1 x 28,2 cm 22,5 x 16,8 cm
H.C. sign.
Edition of 145
Kaplan/Baum 5 B



Joan Miró
(Barcelona 1893 - 1983 Palma de Mallorca)
"La géante"
(Die Riesin)
drypoint and aquatint 1938
44,6 x 33 cm 34,7 x 23,7 cm
18/30 sign. num.
Edition of 36
Dupin 0027



Robert Motherwell
(Aberdeen/USA 1915 - 1991 Provincetown)
"Mexican Night II"
aquatint 1984
63,3 x 61 cm 45 x 44,5 cm
29/70 sign. num.
Edition of 95
Belknap 318



Sean Scully
(geb. 1945 Dublin)
"Brown"
from **"Landlines and Robes"**
aquatint 2018
76,2 x 63,5 cm 50,8 x 45,7 cm
31/40 sign. num. dat.
Edition of 54
Scully SS3240



Sean Scully
(geb. 1945 Dublin)
"Pink"
from **"Landlines and Robes"**
aquatint 2018
76,2 x 63,5 cm 50,8 x 45,7 cm
30/40 sign. num. dat.
Edition of 54
Scully SS3282



Pierre Soulages
(Rodez 1919 - 2022 Nîmes)
"Lithographie No. 18"
from **"La peau des choses" (Michel Ragon)**
lithograph 1968
50,5 x 37,7 cm 50 x 25,7 cm
épreuve d'artiste sign.
Edition of 120
Encrevé/Miessner Kat. Nr. 064



Bernar Venet

(geb. 1941 Château-Arnoux)

"Indetermination 4"

from **"Effondrement Lignes Indeterminées"**

etching photo engraving 2021-22

49,4 x 54,4 cm 33,8 x 39,9 cm

3/40 sign. num.

Edition of 54



Bernar Venet

(geb. 1941 Château-Arnoux)

"Indetermination 5"

from **"Effondrement Lignes Indeterminées"**

etching photo engraving 2021-22

49,5 x 54,4 cm 33,9 x 39,8 cm

3/40 sign. num.

Edition of 54



Andy Warhol

(Pittsburgh 1928 - 1987 New York)

"The new spirit (Donald Duck)"

From the portfolio **"ADS"** with 10 screenprints

screenprint 1985

96,2 x 96,2 cm

152/190 sign. num.

Edition of 251

Feldman/Schellmann II.357