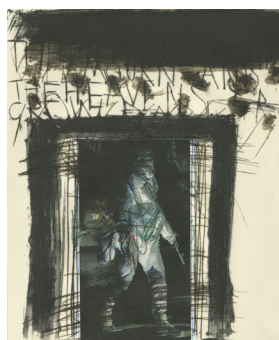




I



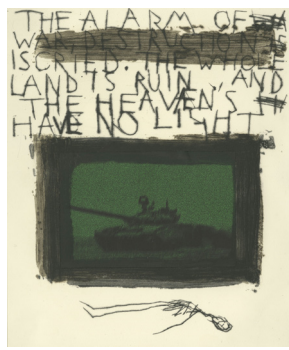
II



III



IV



V



VI



VII



VIII



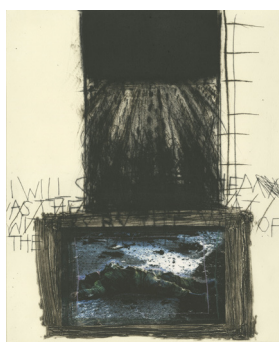
IX



X



XI



XII

## MARCUS REES ROBERTS

### The Book of Jeremiah, 2022

#### Plates I-XII

In late February 2022, as Russia began its invasion of Ukraine, Marcus Rees Roberts began a series of twenty prints using found images of the war from the news media. Using papier collé, he combined these images with drypoints.

The fragments of text are from *The Book of Jeremiah*, which describes the invasion and destruction of Jerusalem in 586 BCE - the deaths, the rapes, the refugees, the deportations, the devastation of somewhere independent and beautiful. In the Authorised Version, the language, particularly in the early chapters, is urgent, passionate, full of a sense of abandonment, and disbelief at what has happened.

It has a terrible prescience and relevance, even more so with recent events in the Near East.

### The Book of Jeremiah, 2022

Twenty Drypoints

Printed on Somerset Velvet soft white 300gsm

Editions of 8 + 2 APs and 1 Publisher's Proof

Plate: 41 x 33.7 cm

Sheet: 48 x 38 cm

Each: GBP £650.00

PUBLISHED | PRATT CONTEMPORARY UK

[www.prattcontemporaryart.co.uk](http://www.prattcontemporaryart.co.uk)

[pca@prattcontemporaryart.co.uk](mailto:pca@prattcontemporaryart.co.uk)

# PRATT

CONTEMPORARY

MARCUS REES ROBERTS



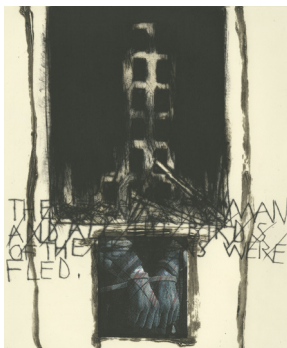
XIII



XIV



XV



XVI



XVII



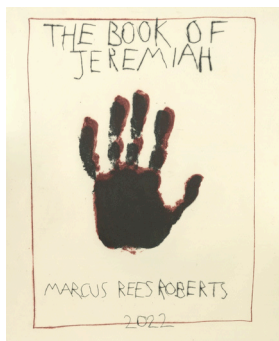
XVIII



XIX



XX



Portfolio Title Sheet

The Book of Jeremiah  
Plates XIII-XX

plus Title Sheet

**The Book of Jeremiah, 2022**

Twenty Drypoints

Printed on Somerset Velvet soft white 300gsm

Editions of 8 + 2 APs and 1 Publisher's Proof

Plate: 41 x 33.7 cm

Sheet: 48 x 38 cm

**Each: GBP £650.00**

PUBLISHED | PRATT CONTEMPORARY UK

[www.prattcontemporaryart.co.uk](http://www.prattcontemporaryart.co.uk)

[pca@prattcontemporaryart.co.uk](mailto:pca@prattcontemporaryart.co.uk)



ANA MARIA PACHECO

Crossing the Threshold I-III, 2023

Studies for paintings  
Printed in colour with additional  
hand-colouring by the artist.

Pacheco's most recent multi-figure polychrome wood sculpture, *Remember*, is currently on exhibition in the UK at the University of Kent in Canterbury.

Further information on the sculpture and exhibition can be found on [anamariapacheco.co.uk](http://anamariapacheco.co.uk)



Crossing the Threshold I-III, 2023

Monotypes  
Studies for painting  
Plate/Sheet 53 x 68 cm  
Unique  
**Each: GBP £4,800.00**

**ALISON LAMBERT**



Cateline, 2023



Melisende, 2023



Nuno, 2023



Velasco, 2023

Whilst drawing has been predominant for many years the monotype process has now become an essential part of Lambert's working practice, and continues to have a symbiotic relationship with the drawings. The technique she employs allows her to develop an image on the plate similar to the way her drawings evolve on paper: There is also a close relationship in terms of the various narratives that she develops in her work.

These four monotypes are among a number of studies the artist has made towards a new collection of large-scale drawings currently in progress. In 2025 this new collection will be exhibited in the UK at the Derby Museum and Art Gallery.

**Cateline, 2023**

**Melisende, 2023**

**Nuno, 2023**

**Velasco, 2023**

Monotype

Printed on Somerset Textured white 300gsm  
and heightened in pastel

Plate: 30 x 25 cm

Sheet: 48 x 38 cm

Unique; signed and dated in pencil

GBP £990.00 each

PUBLISHED | PRATT CONTEMPORARY UK

[www.prattcontemporaryart.co.uk](http://www.prattcontemporaryart.co.uk)

[pca@prattcontemporaryart.co.uk](mailto:pca@prattcontemporaryart.co.uk)