

**IFPDA Print Fair 2023**

**McArthur Binion**



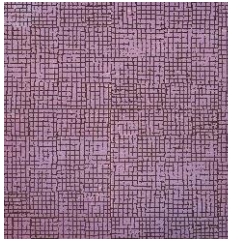
BERKELEY: SUITE:  
10, 2022

\$15,000

Color aquatint  
and spitbite  
aquatint.

40.5" x 40"

Edition of 40



BERKELEY: SUITE:  
11, 2022

\$15,000

Color aquatint.

40.5" x 40"

Edition of 40



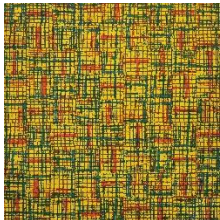
BERKELEY: SUITE:  
12, 2022

\$15,000

Color aquatint  
and spitbite  
aquatint.

40.5" x 40"

Edition of 40



BERKELEY: SUITE:  
13, 2022

\$15,000

Color aquatint.

40.5" x 40"

Edition of 40



BERKELEY: SUITE:  
14, 2022

\$15,000

Color aquatint  
and spitbite  
aquatint.

40.5" x 40"

Edition of 40



BERKELEY: SUITE:  
15, 2022

\$15,000

Color aquatint  
and spitbite  
aquatint.

40.5" x 40"

Edition of 40

**IFPDA Print Fair 2023**



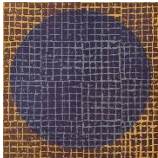
SIXTEEN:  
SQUARE: 1, 2021

\$5,000

Color aquatint.

20" x 20"

Edition of 30



SIXTEEN:  
SQUARE: 2, 2021

\$5,000

Color aquatint.

20" x 20"

Edition of 30



SIXTEEN:  
SQUARE: 3, 2021

\$5,000

Color aquatint  
and hardground  
etching.

20" x 20"

Edition of 30



MAB: 1971: Etching  
Study II

\$20,800  
FRAMED

Ink and graphite  
on paper

28.5" x 22"

Monoprint



MAB: 1971: Etching  
Study III

\$15,800  
FRAMED

Ink and graphite

23.5" x 22.5"

Monoprint

**Torkwase Dyson**



Metamorphosis 1,  
2023

\$6000  
\$21,500 for the  
set of four.

Aquatint and  
spitbite aquatint  
with chine collé.

41" x 44"

Edition of 12



Metamorphosis 2,  
2023

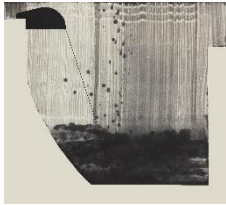
\$6000  
\$21,500 for the  
set of four.

Aquatint and  
spitbite aquatint  
with chine collé.

41" x 44"

Edition of 12

**IFPDA Print Fair 2023**



Metamorphosis 3,  
2023

\$6000  
\$21,500 for the  
set of four.

Aquatint and  
spitbite aquatint  
with chine collé.

41" x 44"

Edition of 12



Metamorphosis 4,  
2023

\$6000  
\$21,500 for the  
set of four.

Aquatint and  
spitbite aquatint  
with chine collé.

41" x 44"

Edition of 12

**Thornton Dial**



Looking for the  
Shade, 1997

\$16,500  
FRAMED

Pastel, graphite  
and watercolor on  
Rives BFK Gray.

44.5" x 31"

Unique



New York Day,  
2000

\$16,500  
FRAMED

Graphite on Rives  
BFK White.

48" x 32"

Unique



Lady Can Hold a  
Tiger, 1990

\$10,500  
FRAMED

Watercolor and  
graphite on white  
paper

23" x 31"

Unique



Nesting Down  
South, 2008

\$10,500  
FRAMED

Watercolor,  
graphite and  
charcoal on Rives  
BFK

29.5" x 22.25"

Unique