

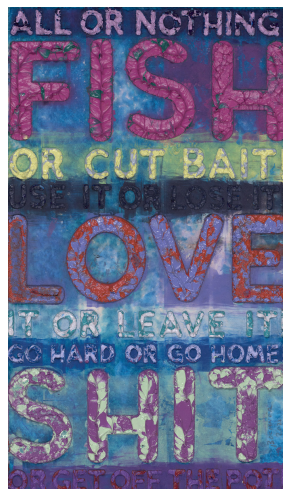
**CHRISTOPHER BEANE**

*Obi Impatiens and Silk Daises (Silk Ave Series),*  
2023  
Flex chromogenic print  
48 x 36"  
Edition of 3



**MEL BOCHNER**

*All or Nothing,* 2022  
Monoprint in oil with collage, engraving and  
embossment on handmade paper  
19 x 10 7/8"



**MEL BOCHNER**

*Go Away,* 2022  
Monoprint in oil with collage, engraving and  
embossment on handmade paper  
12 1/4 x 16"



**MEL BOCHNER**

*HA HA HA*, 2022

Monoprint in oil with collage, engraving and embossment on handmade paper

19 7/8 x 23 7/8"



**HELEN FRANKENTHALER**

*Book of Clouds*, 2007

Aquatint, etching, woodcut & pochoir with hand coloring

35 5/8 x 68 1/4"

Edition of 30



**DAVID HOCKNEY**

*Potted Daffodils*, 1980

Lithograph on cream BFK Rives paper

44 1/2 x 30 1/8"

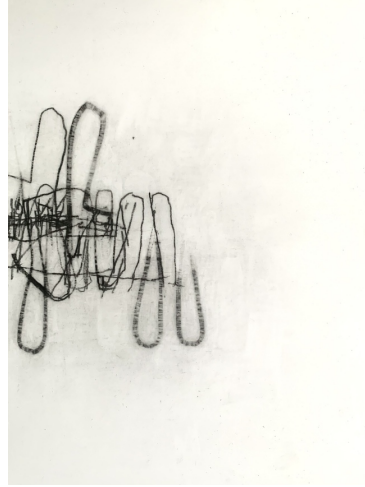
Edition of 98

signed, dated and inscribed 'A.P.XV' in pencil



**JAY KELLY**

*Untitled #2012, 2024*  
Graphite on paper  
12 x 9"



**JAY KELLY**

*Untitled #2011, 2024*  
Graphite on paper  
12 x 9"



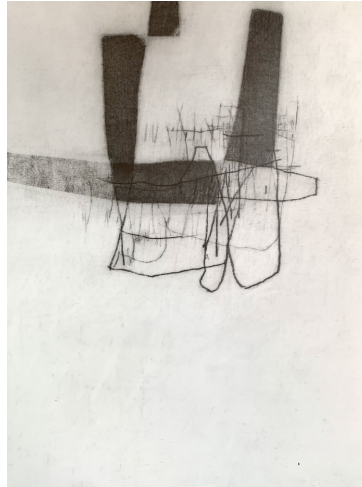
**JAY KELLY**

*Untitled #2010, 2024*  
Graphite on paper  
12 x 9"



**JAY KELLY**

*Untitled #2013, 2024*  
Graphite on paper  
12 x 9"



**SOL LEWITT**

*Brushstrokes in Different Colors in Two Directions (pl 1), 1993*  
Sugar lift aquatint  
47 x 29 1/2"  
Edition of 35



**ROBERT MANGOLD**

*Untitled, 2000*  
Woodcut  
29 1/2 x 55 1/2"  
Edition of 30





**ELIZABETH MURRAY**

*Wiggle Manhattan*, 1992

Lithograph

58 3/4 x 25 5/8"

Edition of 47



**LOUISE NEVELSON**

*The Night Sound*, 1971

Lead intaglio

25 1/2 x 16"

Edition of 150



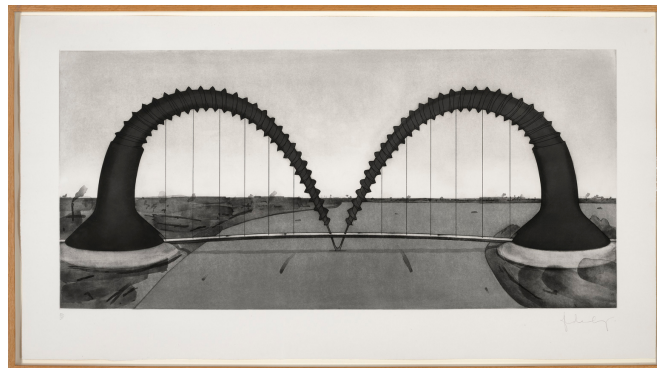
**CLAES OLDENBURG**

*Screw Arch Bridge (State II)*, 1980

Etching and aquatint on Arches paper

31 1/4 x 57 3/4"

Edition of 35



**ROBERT RAUSCHENBERG**

*Water Stop*, 1968

Lithograph

54 x 32"

Edition of 28



**KATIA SANTIBANEZ**

*Shadow*, 2023

Bisque fired stoneware

12 x 5 1/2 x 4"



**KATIA SANTIBANEZ**

*8 Squdou*, 2023

Lithograph

25 1/2 x 19 3/5"

Edition of 25



**KATIA SANTIBANEZ**

*June*, 2023

Bisqued fired stoneware with acrylic

12 x 5 1/2 x 4"



**SEAN SCULLY**

*Wall*, 1988

Etching, aquatint

41 3/4 x 50 3/4"

Edition of 40



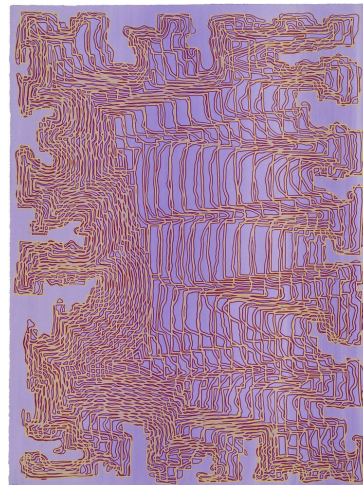
**JAMES SIENA**

*SSLYLYSS, FROM THE XL PORTFOLIO*, 2019

Enamel silkscreen with varied hand painted washes

40 x 30"

Edition of 40



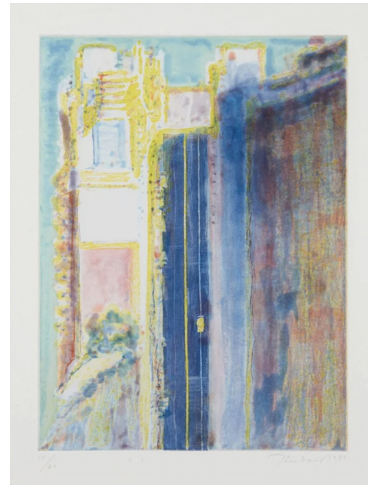
**JAMES SIENA**

*Saccades*, 2023  
Lithograph  
27 3/8 x 22 3/5"  
Edition of 20



**WAYNE THIEBAUD**

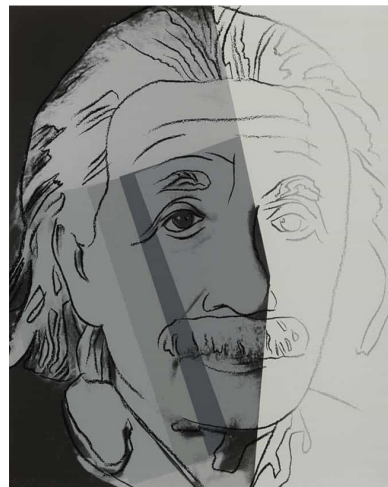
*City Edge*, 1988  
Color aquatint  
19 5/8 x 15 7/8"  
Edition of 60



**ANDY WARHOL**

*Einstein*, 1980  
Screenprint  
40 x 32"  
Edition 200

Signed and numbered





**STANLEY WHITNEY**

*Untitled*, 2016

Sugar lift aquatint, open bite, spit bite, line  
etching

Image size: 19 1/2 x 24 3/8"

Paper size: 29 1/8 x 32 1/8"

Edition of 18



**TERRY WINTERS**

*Marginalia*, 1988

Lithograph

48 x 31 3/4"

Edition of 66

