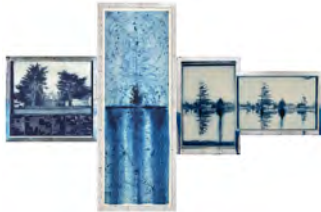


**Judy Pfaff, *Br'er Bear*, 2006**

Photogravure and film positive on Crown Kozo in an artist designed frame  
Edition of 10; 29 1/2 x 90 1/2 inches framed  
\$8,450 framed



**Judy Pfaff, *End of the Rain*, 2000**

\*These artworks are available either as individual pieces or as a triptych; Information for the three individual artworks follows below; 111 x 137 1/2 inches framed overall  
\$19,425 framed



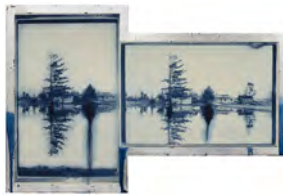
**Judy Pfaff, *End of the Rain (A)*, 2000**

Photogravure and woodcut on Crown Kozo in an artist designed frame  
Edition of 30; 34 3/4 x 38 1/2 inches framed  
\$4,350 framed



**Judy Pfaff, *End of the Rain (B)*, 2000**

Etching and hand painted dye on Crown Kozo in an artist designed frame  
Varied edition of 30; 111 x 39 inches framed  
\$9,350 framed



**Judy Pfaff, *End of the Rain (C)*, 2000**

Photogravure and dye on Crown Kozo in an artist designed frame  
Edition of 30; 39 1/2 x 60 inches framed  
\$5,725 framed



**Judy Pfaff, *Foreseeable Future*, 2017**

Intaglio, blend rolled aluminum, and chine collé on Crown Kozo in an artist designed frame; Varied edition of 18; 16 x 76 inches framed  
\$7,650 framed



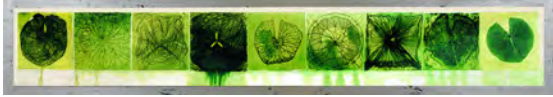
**Judy Pfaff, *Unforeseeable Future*, 2017**

Intaglio, blend rolled aluminum, and chine collé on Crown Kozo in an artist designed frame; Varied edition of 18; 16 x 76 inches framed  
\$7,650 framed



**Judy Pfaff, *...fortunate fish...*, 2017**

Woodcut, hand painted dye, and archival inkjet on Crown Kozo and Epson Premium Luster in an artist designed frame; Varied edition of 12; 49 1/4 x 105 inches framed  
\$17,350 framed



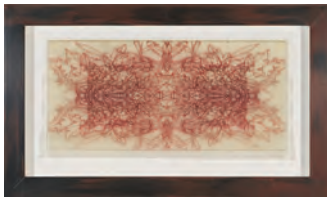
**Judy Pfaff, *Nymphaea*, 2000**

Etching, encaustic, and hand painted dye on Crown Koza in an artist designed frame; Varied edition of 30; 14 x 69 inches framed  
\$5,300 framed



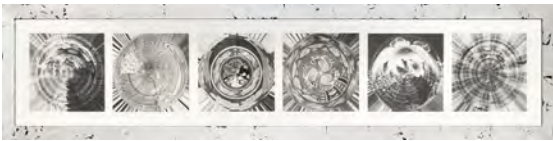
**Judy Pfaff, *Origami*, 2005**

Etching, collograph, and encaustic on Crown Koza in an artist designed frame  
Edition of 20; 101 x 41 inches framed  
\$17,000 framed



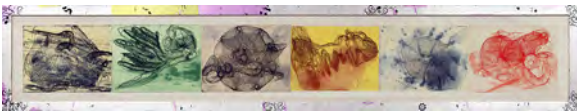
**Judy Pfaff, *OXO-XOX*, 2005**

Letterpress and wax on Crown Koza in an artist designed frame  
Edition of 30; 17 x 27 1/2 inches framed  
\$2,975 framed



**Judy Pfaff, *Spin*, 2017**

Photogravure on Crown Koza in an artist designed frame  
Edition of 30; 17 x 73 inches framed  
\$5,135 framed



**Judy Pfaff, "*Tlön, Uqbar, Orbis Tertius*," 2002**

Etching with surface roll on Crown Koza in an artist designed frame  
Edition of 45; 18 3/4 x 102 1/4 inches framed  
\$6,600 framed



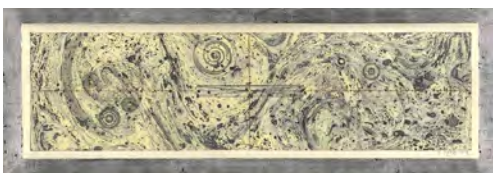
**Judy Pfaff, "*Ukbar, Ucbar, Ooqbar, Ookbar, Oukbar*," 2002**

Intaglio with surface roll on Crown Koza in an artist designed frame  
Edition of 45; 15 1/4 x 90 1/2 inches framed  
\$5,875 framed



**Judy Pfaff, *Untitled (colored lace)*, 2005**

Etching, surface roll, lithography, and wax on Crown Koza and Rives BFK in an artist designed frame; Edition of 30; 17 x 27 1/2 inches framed  
\$3,000 framed



**Judy Pfaff, *Untitled (marbleized)*, 2004**

Intaglio, surface roll, and encaustic on Crown Koza in an artist designed frame  
Edition of 30; 18 1/4 x 47 3/4 inches framed  
\$2,775 framed



**Judy Pfaff, *Untitled #2*, 2008**

Etching, relief, archival inkjet, and hole punching on Crown Kozo and Somerset Satin; Edition of 40; 18 1/2 x 23 inches framed  
\$2,650 framed



**Judy Pfaff, *Untitled #3*, 2008**

Etching, relief, archival inkjet, and hole punching on Crown Kozo and Somerset Satin; Edition of 40; 18 1/2 x 23 inches framed  
\$2,650 framed



**Judy Pfaff, *Untitled #7*, 2008**

Etching, relief, archival inkjet, and hole punching on Crown Kozo and Somerset Satin; Edition of 40; 18 1/2 x 23 inches framed  
\$2,650 framed



**Judy Pfaff, *Untitled #8*, 2008**

Etching, relief, archival inkjet, and hole punching on Crown Kozo and Epson Enhanced; Edition of 40; 18 1/2 x 23 inches framed  
\$2,650 framed



**Judy Pfaff, *Untitled #9*, 2008**

Etching, relief, archival inkjet, and hole punching on Crown Kozo and Somerset Satin; Edition of 40; 18 1/2 x 23 inches framed  
\$2,900 framed



**Judy Pfaff, *...wind-deer and the honey-grass...*, 2017**

Woodcut, hand painted dye and ink, archival inkjet on clear plastic film and Crown Kozo in an artist designed frame; Varied edition of 12; 49 1/4 x 105 inches framed  
\$18,850 framed



**Judy Pfaff, *Year of the Dog #1*, 2009**

Woodblock, collage, and hand painting on Crown Kozo and Mohawk Superfine Cover; Varied edition of 12; 45 1/4 x 92 1/2 inches framed  
\$16,750 framed



**Judy Pfaff, *Year of the Dog #13*, 2009**

Woodblock, collage, and hand painting on Crown Kozo and Mohawk Superfine Cover; Varied edition of 12; 45 1/4 x 92 1/2 inches framed  
\$16,750 framed